

Light efficiency:

100 Lumen/Watt

Light quality:

CRI: 81.8

Color temperature:

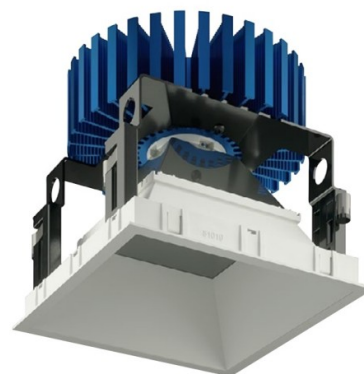
3026 K

Output: 3967 lm

Peak: 2905 cd

Power: 39.9 W

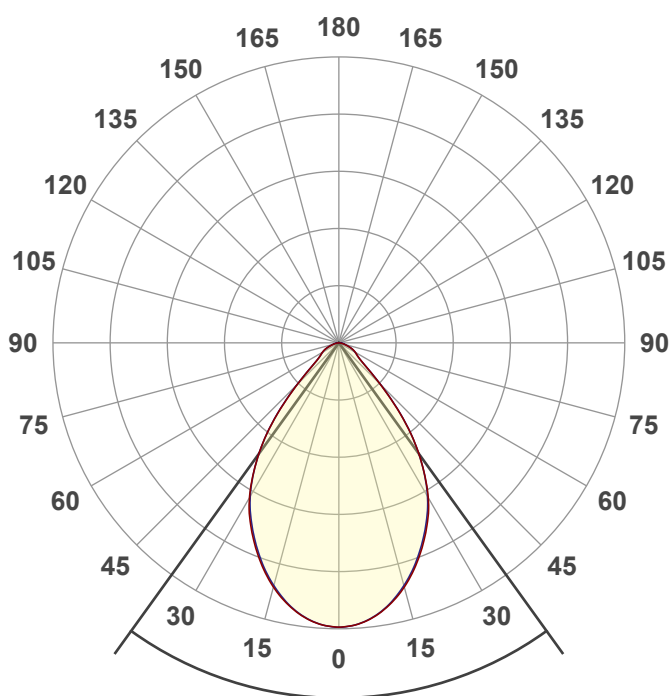
PF: 0.99



NU6-QD-SW-45LM-30K-80-HE75-WH-WH

Date and time:

9/7/2022 11:11:37 AM



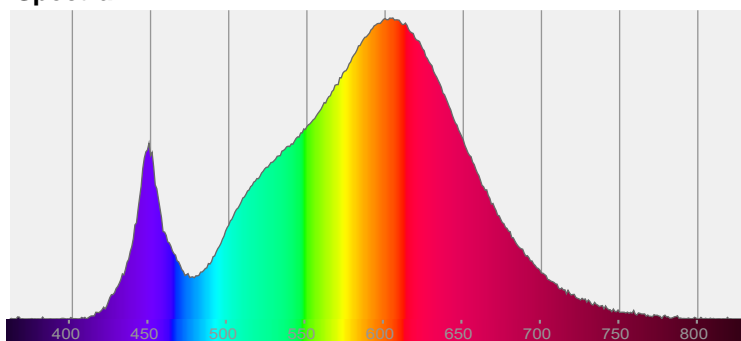
Beam angle

71.6°

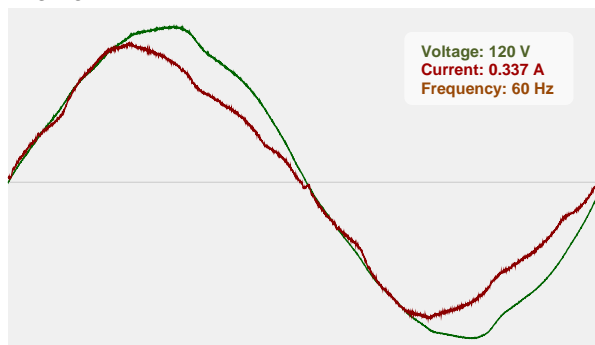


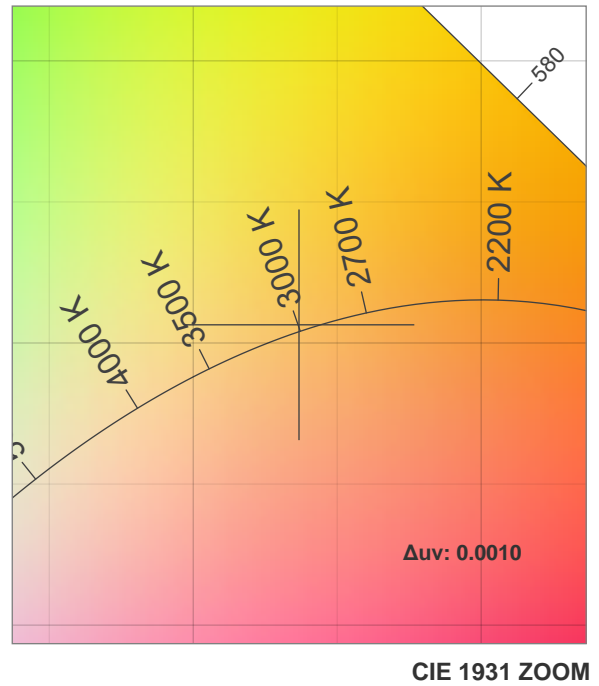
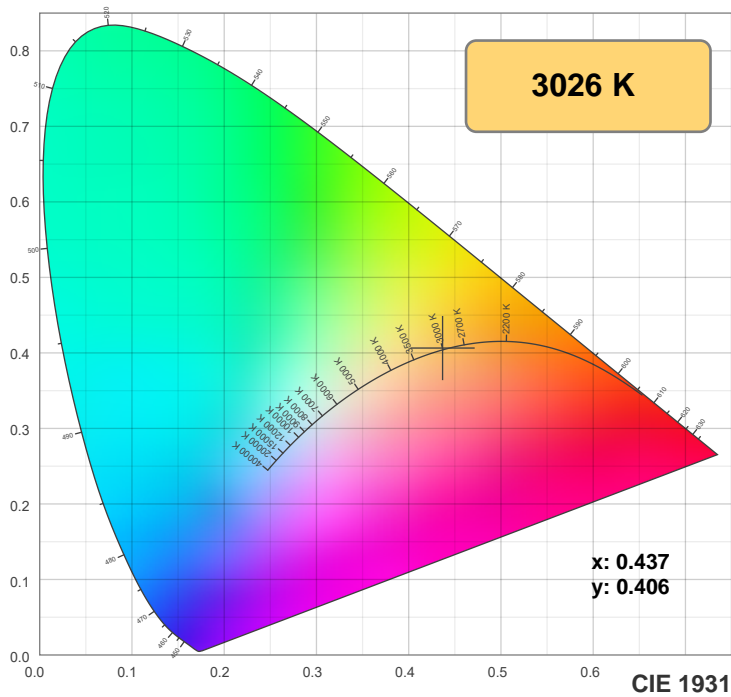
CIE 1931
x: 0.437
y: 0.406

Spectra

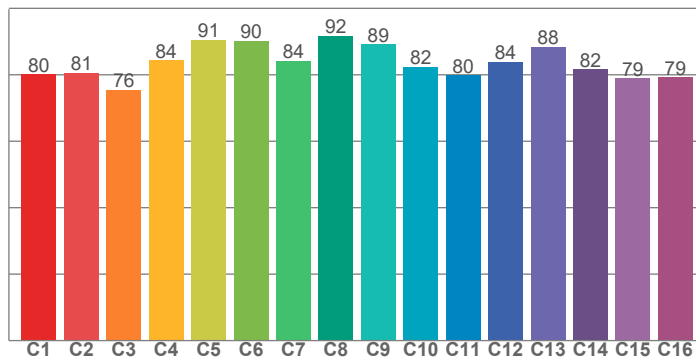


Power

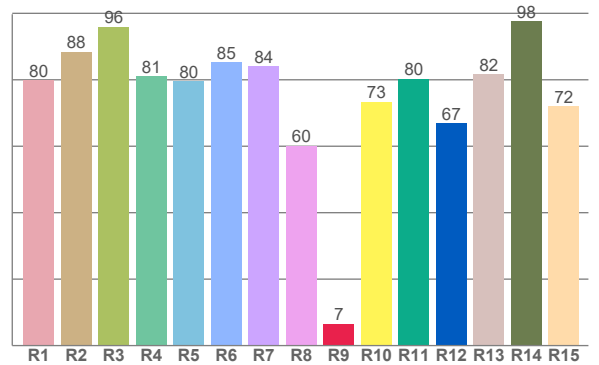




TM30: 83.7



CRI: 81.8 (R1-R8)



CRI R values, only R1-R8 are used to calculate final CRI value

R1	R2	R3	R4	R5	R6	R7	R8	R9	R10	R11	R12	R13	R14	R15
79.9	88.4	96.0	81.1	79.6	85.4	84.2	60.2	6.6	73.4	80.3	67.0	81.7	97.6	72.1

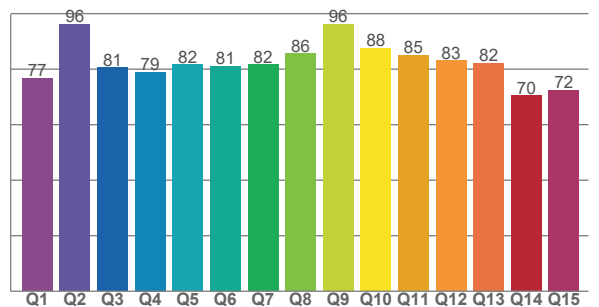
TM30 C values, 16 binned values out of total of 99 C values

C1	C2	C3	C4	C5	C6	C7	C8	C9	C10	C11	C12	C13	C14	C15	C16
80.1	80.7	75.5	84.4	90.5	90.2	84.2	91.7	89.1	82.4	79.9	84.0	88.4	81.6	78.9	79.2

CQS Q values

Q1	Q2	Q3	Q4	Q5	Q6	Q7	Q8	Q9	Q10	Q11	Q12	Q13	Q14	Q15
76.7	96.2	80.6	79.0	81.7	81.1	81.7	85.6	96.1	87.5	85.0	83.1	82.3	70.4	72.5

CQS: 81.2



Color parameters

Color temperature	Color rendering index	Red component	Color fidelity	Color gamut	Color quality scale	Color coordinate cie 1931	Color coordinate cie 1931	Color coordinate	Color coordinate	Color deviation from black body
CCT	CRI	CRI R9	TM30 Rf	TM30 Rg	CQS	x	y	u	v	Δuv
3026 K	81.8	6.6	83.7	97.4	81.2	0.437	0.406	0.249	0.348	0.0010

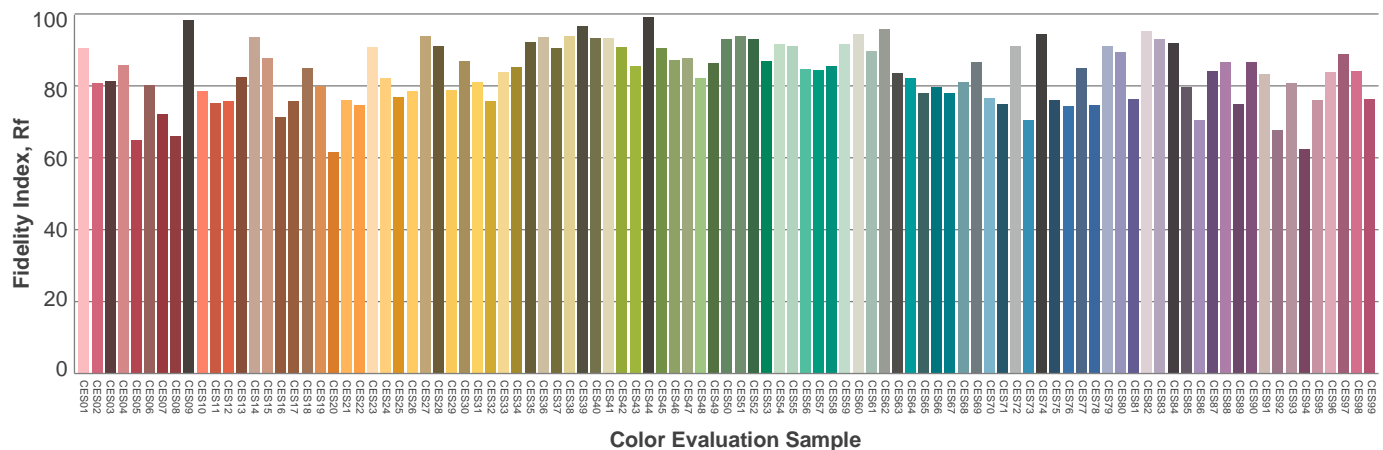
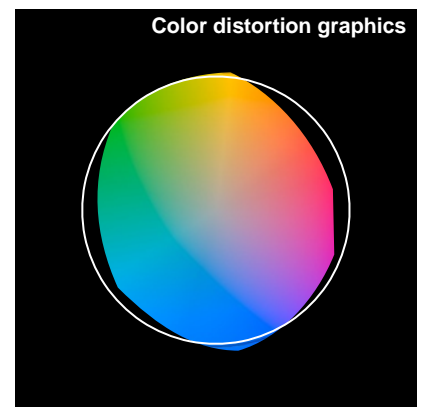
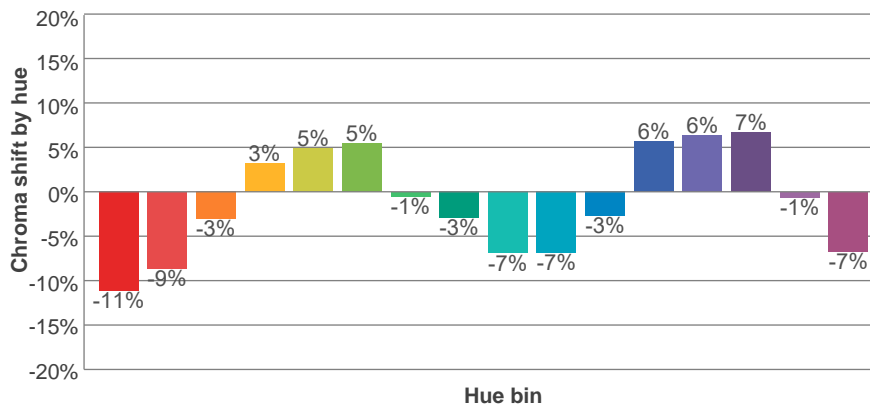
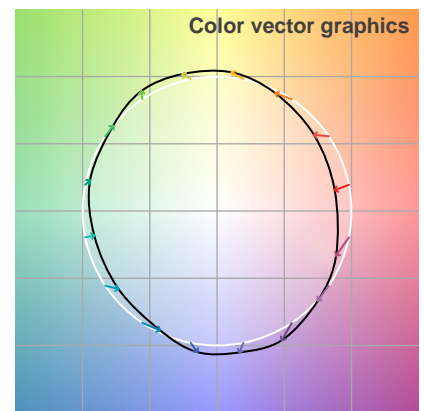
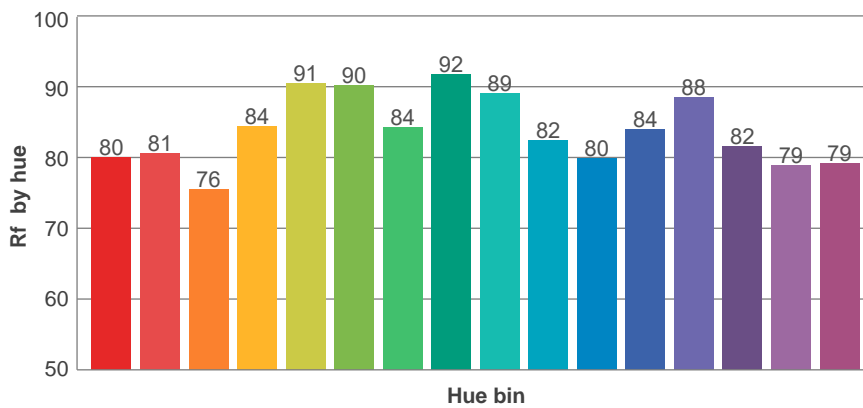
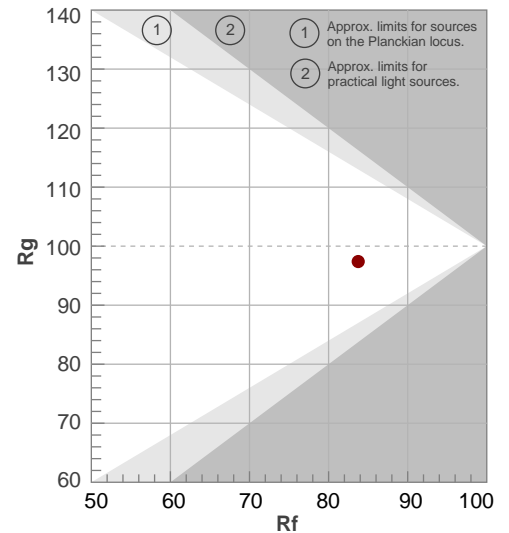
Rf 83.7

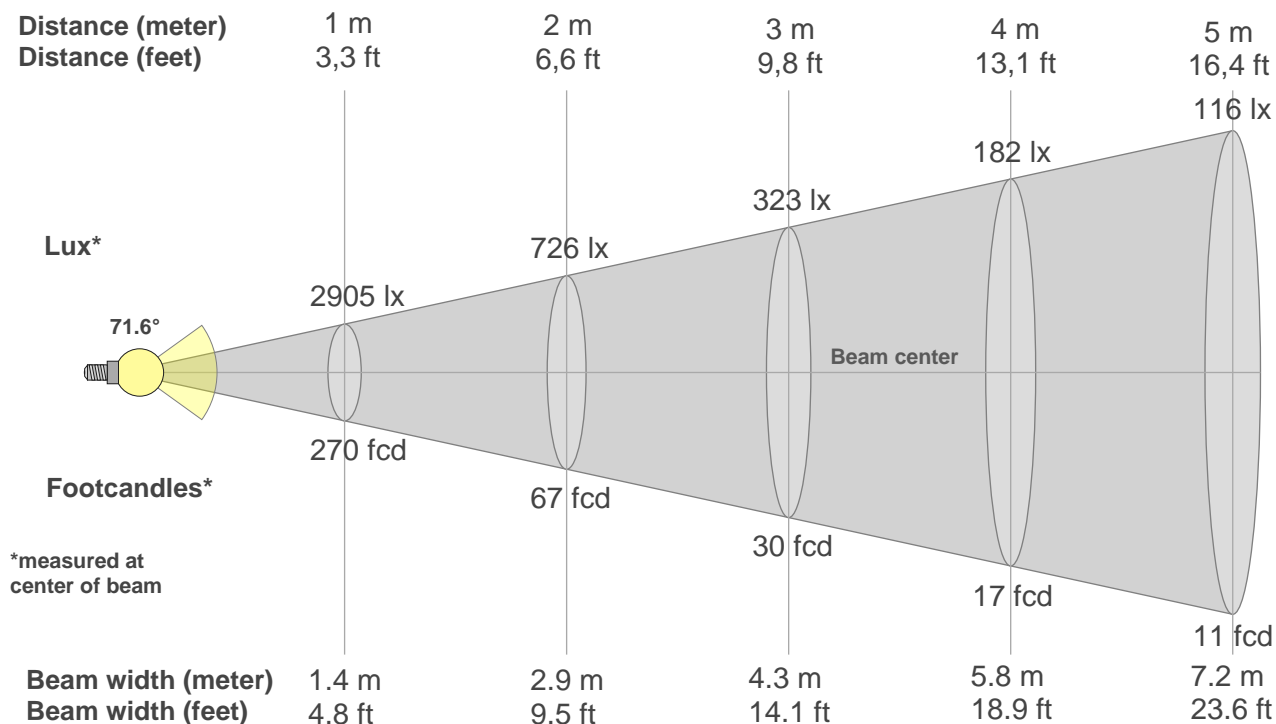
Fidelity index Rf

Rg 97.4

Gammut index Rg

Hue Bin	R _f	Graphic shifts (%)	
		Chroma	Hue
1	80	-11%	-2%
2	81	-9%	7%
3	76	-3%	13%
4	84	3%	10%
5	91	5%	5%
6	90	5%	-3%
7	84	-1%	-10%
8	92	-3%	-4%
9	89	-7%	0%
10	82	-7%	7%
11	80	-3%	14%
12	84	6%	6%
13	88	6%	-4%
14	82	7%	-13%
15	79	-1%	-14%
16	79	-7%	-15%





Beam intensities from 1-20m

1m	2m	3m	4m	5m	6m	7m	8m	9m	10m	11m	12m	13m	14m	15m	16m	17m	18m	19m	20m
3.3ft	6.6ft	9.8ft	13.1ft	16.4ft	19.7ft	23ft	26.2ft	29.5ft	32.8ft	36.1ft	39.4ft	42.7ft	45.9ft	49.2ft	52.5ft	55.8ft	59.1ft	62.3ft	65.6ft
2905lx	726lx	323lx	182lx	116lx	81lx	59lx	45lx	36lx	29lx	24lx	20lx	17lx	15lx	13lx	11lx	10lx	9lx	8lx	7lx
269.9fcd	67.5fcd	30fcd	16.9fcd	10.8fcd	7.5fcd	5.5fcd	4.2fcd	3.3fcd	2.7fcd	2.2fcd	1.9fcd	1.6fcd	1.4fcd	1.2fcd	1.1fcd	0.9fcd	0.8fcd	0.7fcd	0.7fcd

Intensities in 0° c-plane

0°	5°	10°	15°	20°	25°	30°	35°	40°	45°	50°	55°	60°	65°	70°	75°	80°	85°	90°	95°
2905	2866	2754	2583	2363	2112	1825	1459	1040	603	332	236	195	153	101	60	33	13	1	1
100%	99%	95%	89%	81%	73%	63%	50%	36%	21%	11%	8%	7%	5%	3%	2%	1%	0%	0%	0%

Intensities in 90° c-plane

0°	5°	10°	15°	20°	25°	30°	35°	40°	45°	50°	55°	60°	65°	70°	75°	80°	85°	90°	95°
2905	2863	2748	2568	2344	2090	1810	1456	1043	607	330	233	190	149	99	60	33	12	1	1
100%	99%	95%	88%	81%	72%	62%	50%	36%	21%	11%	8%	7%	5%	3%	2%	1%	0%	0%	0%

Intensities in 180° c-plane

0°	5°	10°	15°	20°	25°	30°	35°	40°	45°	50°	55°	60°	65°	70°	75°	80°	85°	90°	95°
2905	2866	2754	2583	2363	2112	1825	1459	1040	603	332	236	195	153	101	60	33	13	1	1
100%	99%	95%	89%	81%	73%	63%	50%	36%	21%	11%	8%	7%	5%	3%	2%	1%	0%	0%	0%

Intensities in 270° c-plane

0°	5°	10°	15°	20°	25°	30°	35°	40°	45°	50°	55°	60°	65°	70°	75°	80°	85°	90°	95°
2905	2863	2748	2568	2344	2090	1810	1456	1043	607	330	233	190	149	99	60	33	12	1	1
100%	99%	95%	88%	81%	72%	62%	50%	36%	21%	11%	8%	7%	5%	3%	2%	1%	0%	0%	0%

Beam angle 50%	Field angle 10%	Cutoff angle 2,5%	Intensity ratio in 120° cone	Intensity ratio in 90° cone
71.6°	107.2°	146.9°	94.2%	81.7%